



Forest Order No. 03-24-11
Eldorado National Forest
Pacific Southwest Region
Crozier Fire Area, Road, and Trail Temporary Closure

Pursuant to 16 U.S.C. § 551 and 36 C.F.R. § 261.50(a) and (b), and to provide for public safety, the following acts are prohibited within the Eldorado National Forest. This Order is effective from August 9th, 2024, through March 31, 2025.

1. Going into or being upon National Forest System lands within the Crozier Fire Temporary Closure Area, as described in Exhibit A and shown on Exhibit C. 36 C.F.R. § 261.52(e).
2. Being on any National Forest System road within the Crozier Fire Temporary Closure Area, including National Forest System roads that comprise part of the Crozier Fire Closure boundary, as listed in Exhibit B and shown on Exhibit D. 36 C.F.R. § 261.54(e).
3. Being on any National Forest System trail within the Crozier Fire Temporary Closure Area, including National Forest System trails that comprise part of the Crozier Fire Closure boundary, as listed in Exhibit C and shown on Exhibit D. 36 C.F.R. § 261.55(a).


Pursuant to 36 C.F.R. § 261.50(e), the following persons are exempt from this Order:

1. Any Federal, State, or local officer, or member of an organized rescue or fire-fighting force in the performance of an official duty.
2. Persons with Forest Service Permit No. FS-7700-48 (Permit for Use of Roads, Trails, or Areas Restricted by Regulation or Order), specifically exempting them from this Order.
3. Persons with a Federal Energy Regulatory Commission license or Forest Service special use authorization for an electric transmission line, an oil or gas pipeline, or communications site may access their permit areas to conduct administrative and emergency functions to property and related assets.

These prohibitions are in addition to the general prohibitions contained in 36 C.F.R. Part 261, Subpart A.

A violation of these prohibitions is punishable by a fine of not more than \$5,000 for an individual or \$10,000 for an organization, or imprisonment for not more than 6 months, or both. 16 U.S.C. § 551 and 18 U.S.C. §§ 3559, 3571, and 3581.

Executed in Georgetown, California, this 8 day of August 2024.

 8/8/2024

JENNIFER HOUSE
Acting Forest Supervisor
Eldorado National Forest
Pacific Southwest Region

**Forest Order No. 03-24-11
Eldorado National Forest
Pacific Southwest Region
Crozier Fire Area, Road, and Trail Temporary Closure**

Exhibit A

The boundary of the Crozier Fire Closure Area is shown on Exhibit D, and described below:

- to the West by Highway 193
- to the South by the South Fork of the American River
- to the East by Silver Creek to Little Silver Creek
- to the North by Wentworth Springs Road

**Forest Order No. 03-24-11
Eldorado National Forest
Pacific Southwest Region
Crozier Fire Area, Road, and Trail Temporary Closure**

**Exhibit B
Table of Closed Roads**

NFS Road Number	Road Name	Segment Length
12N29H	STUMPY MEADOWS BOAT RAMP	0.213
12N80G	PIPER LANE	0.478
12N92E	TRAVERSE CREEK PARKING	0.107
12N56	BIG X MTN	5.544
12N56E	MANZANITA	0.35
12N59B	SLAB SOUTH	0.6
12N71	BALD MTN. LOOKOUT	0.591
11N80	SOUTH BIG X	0.82
12N43A	WATER CANYON #1	0.2
12N29E	STUMPY MEADOWS CAMPGROUND	0.51
12N81E	HARRICKS BEAR	0.257
12N92	MEADOW BROOK	0.7
12N60C	DARK CANYON	0.74
12N70	ROCK CREEK	1.74
12N70	ROCK CREEK	1.397
12N70	ROCK CREEK	4.881
12N70	ROCK CREEK	1.562
12N70	ROCK CREEK	7.481
12N70	ROCK CREEK	2.139
12N70H	WHALER WATER	0.022
12N57	BUTCHER KNIFE JOE	5.118
11NY20	GASPARNI	2
12N82	BALLARAT CANYON	1.935
12N82C	BALLART SPUR SOUTH	1
12N83	SLATE MOUNTAIN MINE	4.15
12N83	SLATE MOUNTAIN MINE	0.95
11N92	ANDYS CABIN	0.8
12N71	BALD MTN. LOOKOUT	1.509
12N71A	BALD MOUNTAIN SPRING	1
11N80	SOUTH BIG X	5.38
11N80A	OVER BIG X	0.7
11N89	EAST CROZIER	2.9
11N92A	ANDYS CABIN WEST	0.3
12N43	WATER CANYON	1.1
12N43B	WATER CANYON #2	0.28

12NY27A	SIDE SADDLE	0.528
12NY28	DARLING CABIN N	0.4
12N81B	ROUND SPUR	0.278
12N82A	BALLARAT	0.21
12N87	MACE MILL	2.93
12N56G	BRUSH	0.4135
12N64	SAND MOUNTAIN BLVD	5
12N80	DARLING RIDGE	6
12N59	SLAB CREEK	5.1
12N59	SLAB CREEK	0.05
12N59	SLAB CREEK	2.826
12N60P	CULDESAC	0.1
12NY21	SUGARLOAF WEST	1.465
12N84	RIDGE ROUTE	0.8
12N81	SLATE MTN RIDGE	1.07
12N81	SLATE MTN RIDGE	1.43
12N70G	SUGARLOAF 4WD	1.149
11N80B	RIDGE	0.525
12N79A	NORTH CANYON CREEK	1.47
11N12A	POHO HO	0.8
12N34	FOREBAY	10.04
11N81	CROZIER LOOP	2.8
12N29D	BLACK OAK CAMPGROUND	0.143
11N12	POHO RIDGE	1.4
12N83D	CHILI FUELBREAK	0.276
12N88	TOBACCO GULCH WEST	0.9
12NY27	SADDLE BRUSH	0.99
12N54	SUGAR PINE LOOP	3.078
12N79	CANYON CREEK	3.266
12N70D	WHALER CREEK SPUR	0.7
12N72	BALD MOUNTAIN LOOKOUT	4.417
12N76	SLATE MOUNTAIN	3.5
11NY19	YANKEE LOOP	0.5
12N91	GREY EAGLE SPUR	0.6
12N34L	SADDLEBACK	0.853
12N38A	SANDLOAK EAST	0.42
12NY01	EELL RANCH	1.7
12N38	ROCK CREEK EAST	0.55
12N38	ROCK CREEK EAST	1.45
12N34K	<Null>	0.0147
12N34M	<Null>	0.3032

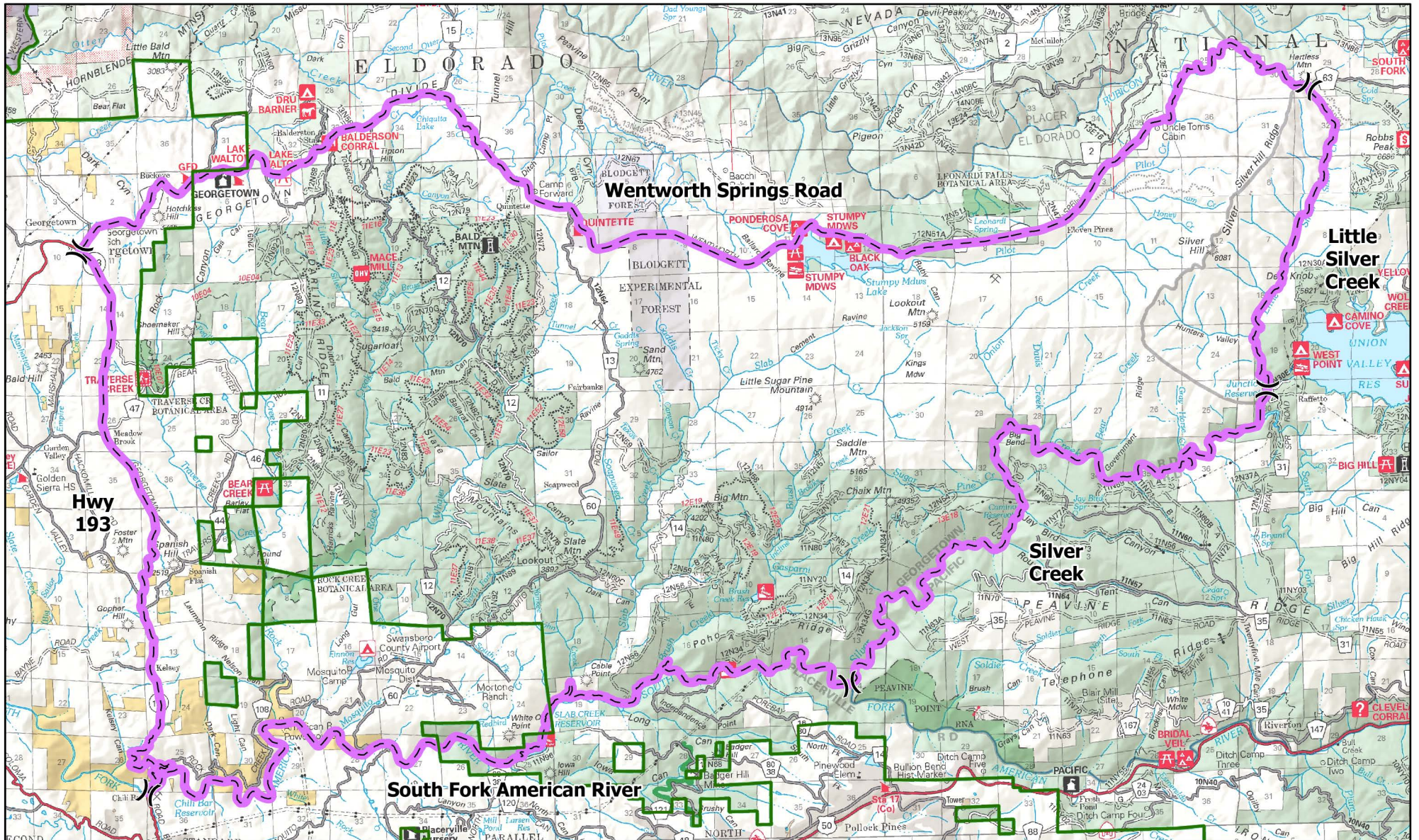
**Forest Order No. 03-24-11
Eldorado National Forest
Pacific Southwest Region
Crozier Fire Area, Road, and Trail Temporary Closure**

**Exhibit C
Table of Closed Trails**

NFS Trail Number	Trail Name	Segment Length	Trail Number marked on ground and on Rock Creek Recreation Trails Trail Guide
11E25	WEST BALD MOUNTAIN	2.5521	9
11E24	DEPTHCHARGE	1.636	9
11E44	BALD MOUNTAIN	2.397	9
11E44	BALD MOUNTAIN	0.483	16
11E44	BALD MOUNTAIN	1.471	9
11E23	ROCK CREEK LOOP	0.98	9
11E23	ROCK CREEK LOOP	0.7	9
11E23	ROCK CREEK LOOP	0.69	9
11E23	ROCK CREEK LOOP	0.36	9
11E23	ROCK CREEK LOOP	0.79	16
11E23	ROCK CREEK LOOP	0.72	16
11E33	DARLING TIE	0.8	9
11E42	FLUME	3.0011	9
11E43	AL BRASS	7.253	9
11E23	ROCK CREEK LOOP	1.523	9
11E23	ROCK CREEK LOOP	14.629	9
11E23	ROCK CREEK LOOP	0.118	16
11E23	ROCK CREEK LOOP	4.81	9
11E23	ROCK CREEK LOOP	0.52	9
11E23	ROCK CREEK LOOP	0.925	9
11E23	ROCK CREEK LOOP	1.495	9
11E49	SOAPWEED	2.53	16
11E50	NORTH 79	0.17	9
11E51	GOIN NOWHERE	0.27	9
11E52	BLUEBIRD	1.458	9
11E37	CROSIER RUN	2.647	16
11E38	CROSIER CUTOFF	1.72	10
12E50	SLATE CANYON	3.958	9
12E50	SLATE CANYON	0.53	16
12E50	SLATE CANYON	4.399	9
12E50	SLATE CANYON	3.08	16
11E35	EAST BALD MTN.	0.17	16
11E35	EAST BALD MTN.	1.18	9
11E36	WHALER LOOP	1.5379	17




11E37	CROSIER RUN	2.06	9
11E37	CROSIER RUN	2.94	10
11E37	CROSIER RUN	1.7	16
11E37	CROSIER RUN	1.819	10
11E30	LOOKOUT	1.4746	9
11E31	BALLARAT	4.115	9
11E32	BALLARAT CUTOFF	1.076	9
11E34	BALD TIE	0.589	9
11E35	EAST BALD MTN.	0.25	16
11E16	UNNECESSARY	2.3	9
11E18	MACE MILL LOOP	6.607	16
11E21	MINERS PIT	0.37	9
11E21	MINERS PIT	0.4355	16
11E27	DARLING RIDGE LOOP	4.83	9
11E28	WHALER RIDGE	1.019	9
11E29	FIVE CORNERS	1.2027	9
11E13	MARTIN	2.083	16
11E13	MARTIN	0.162	9
11E13	MARTIN	0.405	9
11E13	MARTIN	1.55	9
11E54	BALLARAT RAVINE	0.57	9
12E21	CAMP SEVEN	0.572	17
12E17	BRUSHY	1.011	17
12E18	BRUSHY TIE	0.097	17
12E19	BIG X ATV	3.65	17
12E20	BIG BRUSHY	2.87	17
12E15	POHO	0.84	17
12E16	POHO POWER	0.49	17
13E18	SUGARPINE POINT	2.876	13E18
11E20	SILVER TIE	0.128	11E20
11E19	LITTLE SILVER	2.935	11E19
12E21	CAMP SEVEN	0.238	12E21
11E15	SUGARLOAF	1.272	11E15
10E04	MAR DET	5.766	10E04
11E14	BALD MOUNTAIN CANYON	1.986	11E14
12E30	BRUSH CREEK RESERVOIR	0.059	12E30
11E12	ONE EYE CREEK	2.223	11E12
12E02	EDSON BURN INTERPRETIVE	0.1705	12E02
10E09	STIFLE CLAIM	0.193	10E09
10E08	BEDROCK MORTAR	0.396	10E08
10E07	CHAPARRAL LOOP	0.542	10E07
10E06	TRAVERSE CREEK LOOP	1.456	10E06
11E48	MACE TIE	0.2036	11E48
11E45	BALDERSON	0.28	11E45

11E45	BALDERSON	2.36	11E45
11E46	DRU BARNER	1.8494	11E46
11E45	BALDERSON	0.09	11E45
11E45	BALDERSON	0.73	11E45
11E45	BALDERSON	0.93	11E45
11E45	BALDERSON	0.385	11E45



Order No. 03-24-11
Eldorado National Forest
Pacific Southwest Region
Crozier Fire Area, Road, and
Trail Temporary Closure

Exhibit D

-  Closure Boundary
-  Intersection
-  Eldorado National Forest Boundary

